



Chinthareddypalem, Nellore - 524003, A.P.

Ph No: 0861-2317969 | Fax: 0861-2311968.

Recognized by Indian Nursing Council and A.P. Nurses & Midwives Council

Affiliated to NTR University of Health Sciences, A.P. Vijayawada.

Accredited by "International Accreditation Organization (IAO)"

website: www.narayanannursingcollege.com || e-mail: narayana_nursing@yahoo.co.in

STUDENT'S FEEDBACK ON EFFECTIVENESS OF THE FACILITIES 2021-2022

The Narayana College of Nursing has collected student feedback. We have developed a one-of-a-kind feedback form on the effectiveness of the simulation lab facilities. The four-year B.Sc (N), PB.B.Sc (N) & M.Sc (N) student's Feedback Analysis report is shown below.

Data Collection and Analysis

An effort was made to receive feedback from all students of the college. For this purpose, a Google form was created and sent to students. As many as out of 453425 responses have been received on Effectiveness of the Facilities. In order to arrive to comprehensive results, useful statistical tools like percentage, etc. have been used. For the effective presentation of the data, various types of graphs have been used.

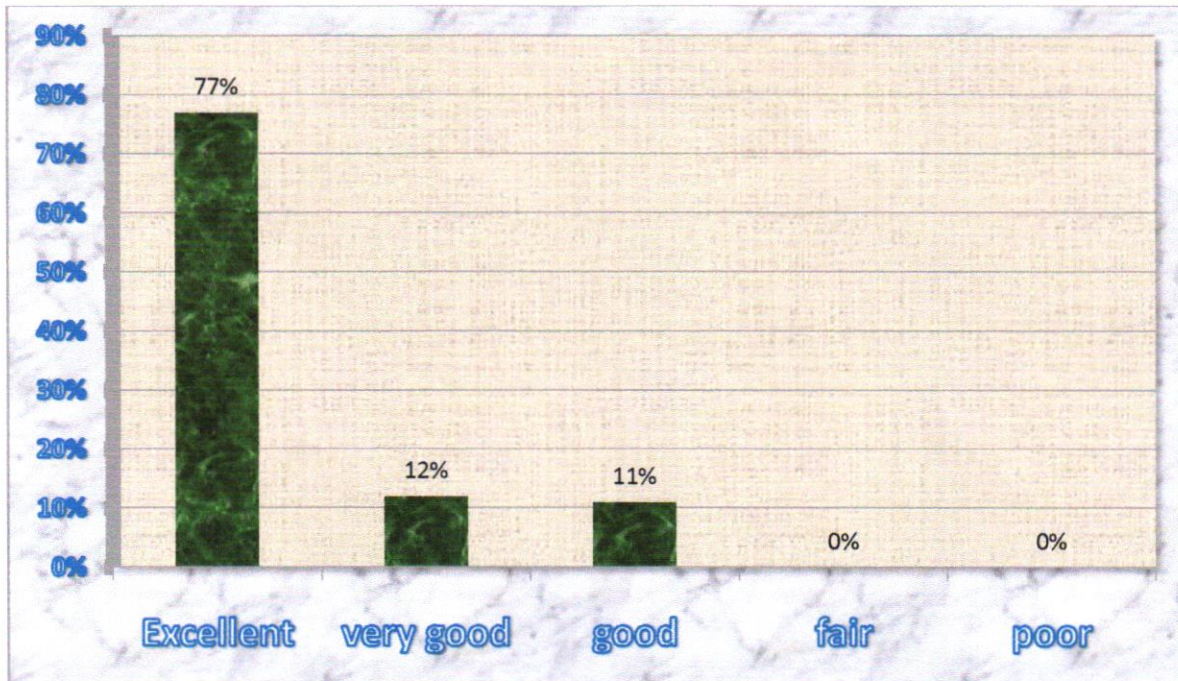


B. Anuj
Principal

NARAYANA COLLEGE OF NURSING
Chinthareddypalem,
NELLORE - 524 003

1. Objectives

- a) Clearly communicated the objectives and expected outcomes to the participants of the simulation scenarios.



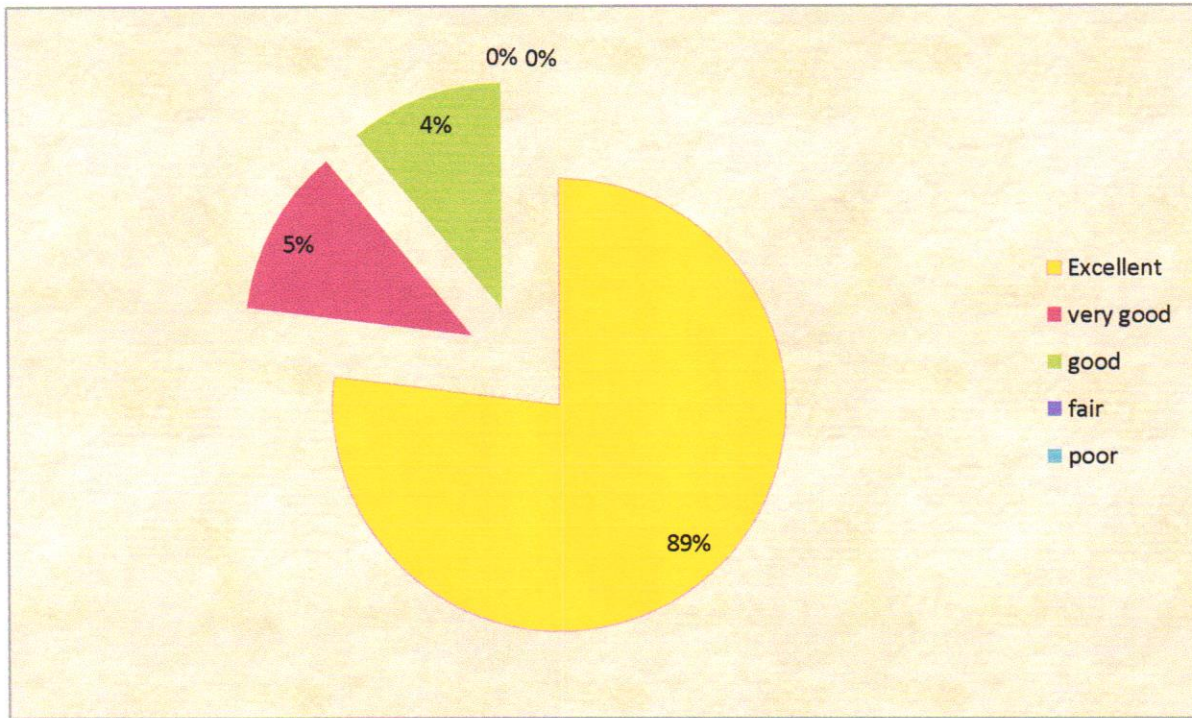
The above diagram demonstrates how the simulation scenarios objectives and expected outcomes were clearly explained to the participants. It reveals that 77% (419) of the students gave excellent feedback. About 12% (2) of the students gave very good and only few students 11% (4) gave a good feed back



Bethy
Principal
NARAYANA COLLEGE OF NURSING
Chinthareddypalem,
NELLORE - 524 003

2. Preparation

b) Manikin is realistic

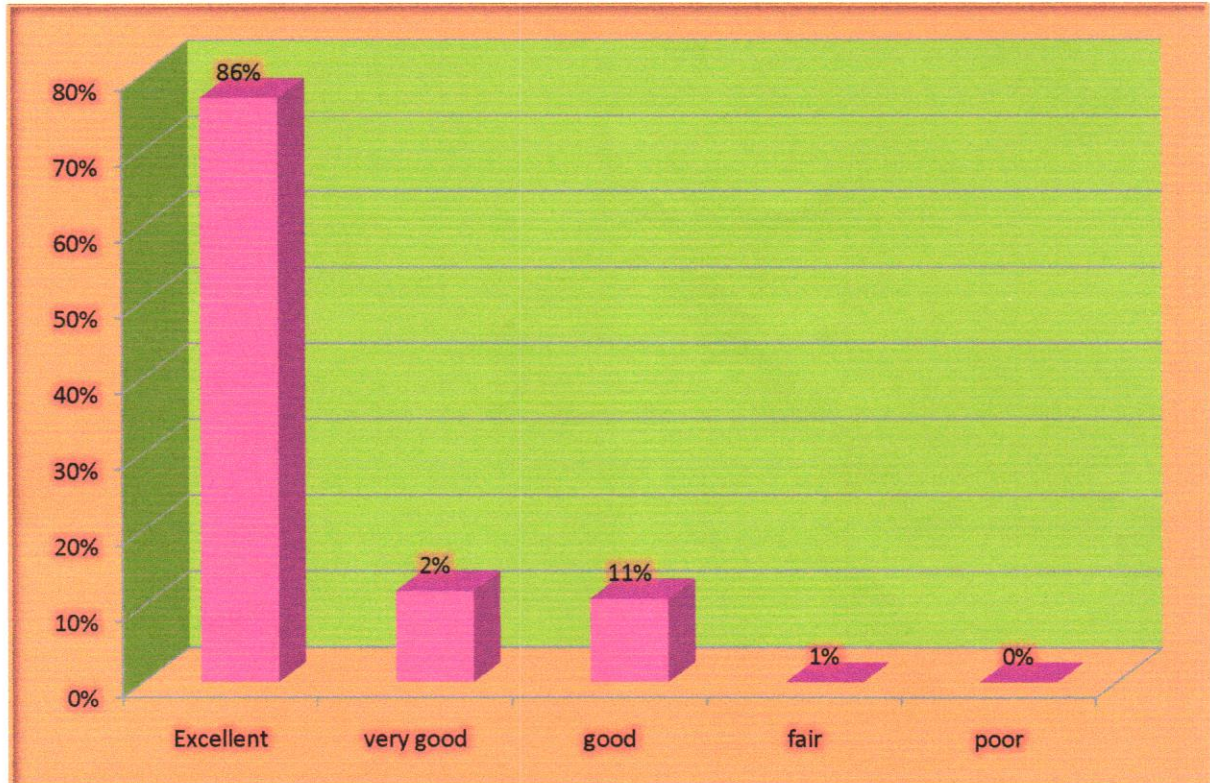


The above Diagram illustrates that 89%(415)of responses were Excellent, with 5%(6) of responses received Very good, 4% (3) of respondents gave it Good, very less 2% (1) of responses were poor.



B. Chamy
Principal
NARAYANA COLLEGE OF NURSING
Chinthareddypalem,
NELLORE - 524 003

C) Simulation event -feedback

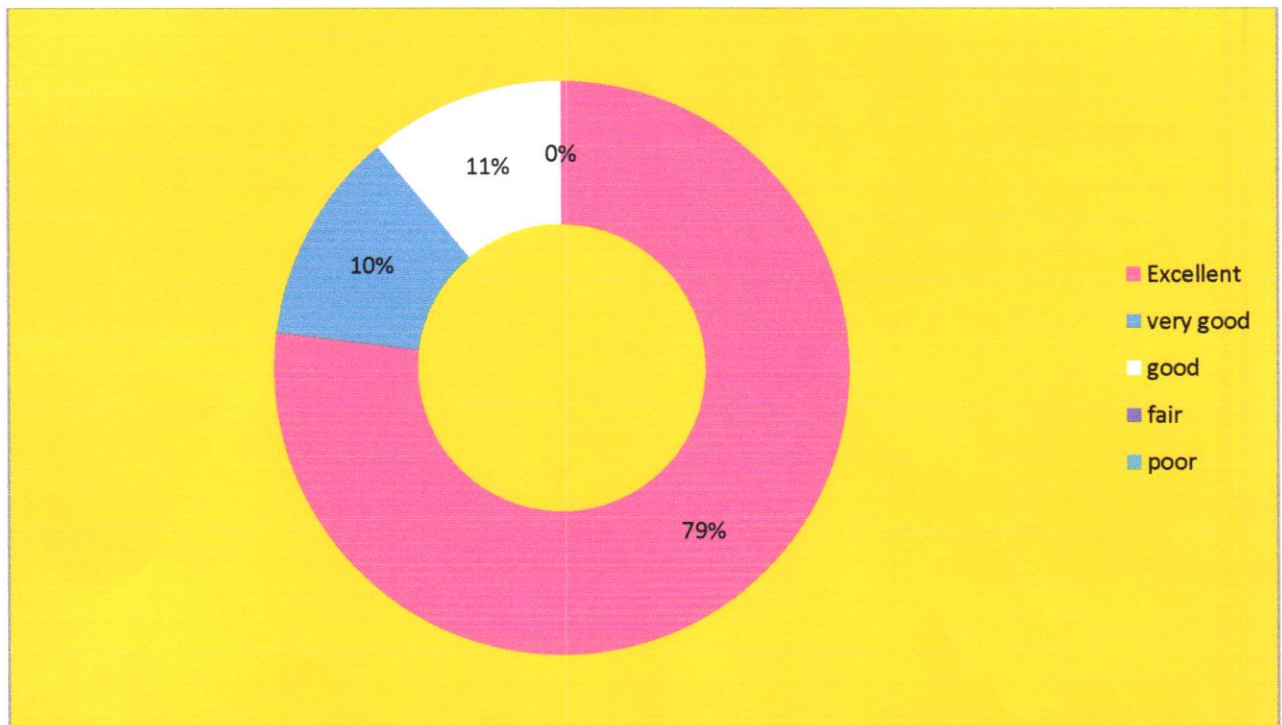


The above Bar Diagram describes that the simulation event was well organized. It was noticed that 86% (390) of responses were Excellent, with 2% (10) of responses received Very good, 11% (25) of respondents gave Good and only 1% (2) respondents gave a fair response.



B. Anuj
Principal
NARAYANA COLLEGE OF NURSING
Chinthareddypalem,
NELLORE - 524 003

D) The availability of articles and equipments

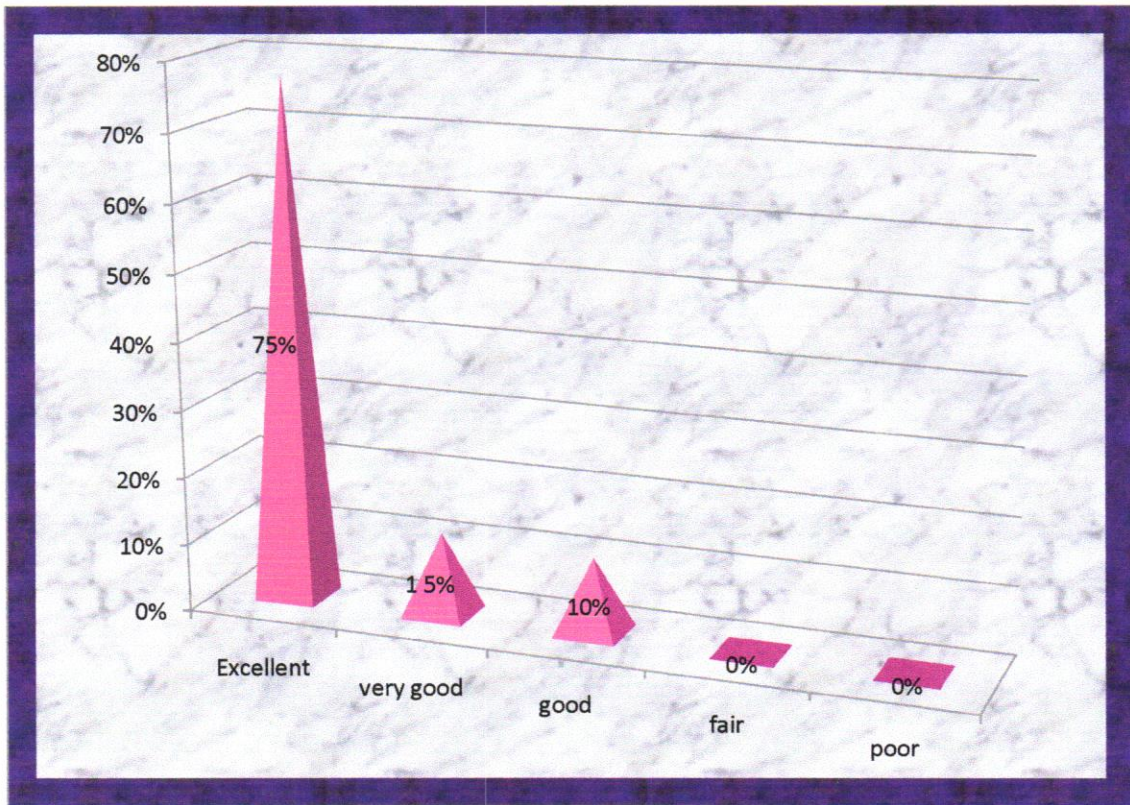


The above diagram explains that the availability of articles and equipments. It was revealed that 79% (399) of the students gave excellent feedback, 10% (11) of respondents are given a very good, 11% (15) of respondents were given a Good.



B. Anuj
Principal
NARAYANA COLLEGE OF NURSING
Chinthareddypalem,
NELLORE - 524 003

E) The usage of Simulation

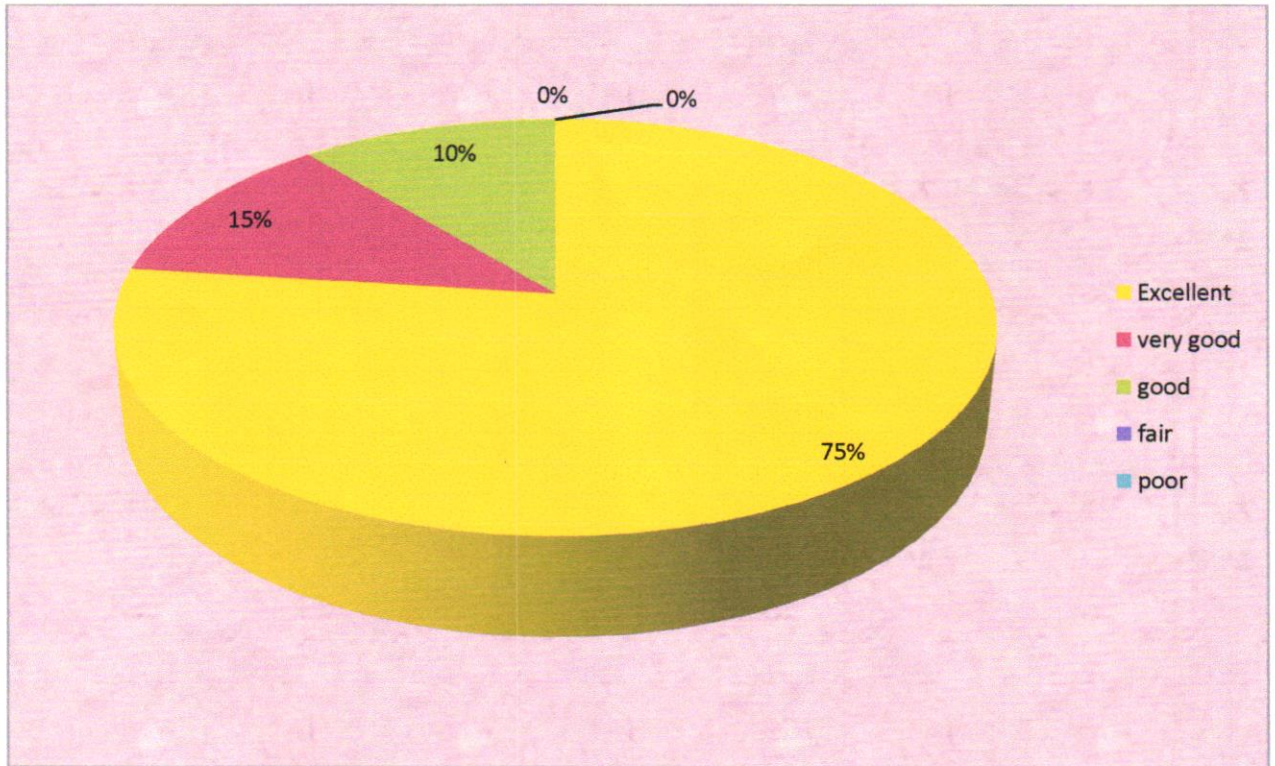


The above bar diagram depicts that the usage of Simulation is realistic. It was revealed that 75%(380) of the students gave excellent feedback, 15% (20) of respondents are given a very good, 10% (5) of respondents were given a Good .



B. Anuj
Principal
NARAYANA COLLEGE OF NURSING
Chinthareddypalem,
NELLORE - 524 003

F) Equipment and its calibrations

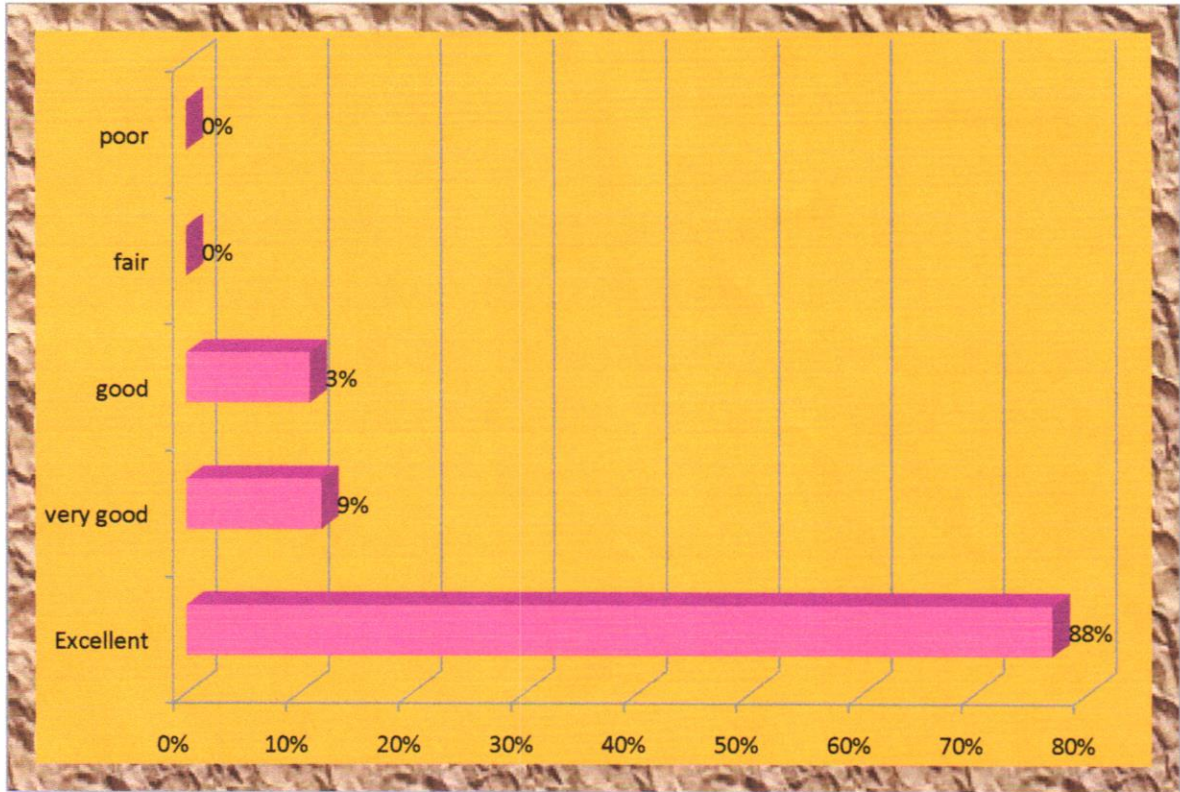


The above pie diagram provides that Equipment and its calibrations are appropriate. It was noticed that, 75%(375) students have said that excellent, 15%(25) students have given feedback of very good, only 10% (20) students have given a good response.



B. Anuj
Principal
NARAYANA COLLEGE OF NURSING
Chinthareddypalem,
NELLORE - 524 003

G) The simulation teaching efficient

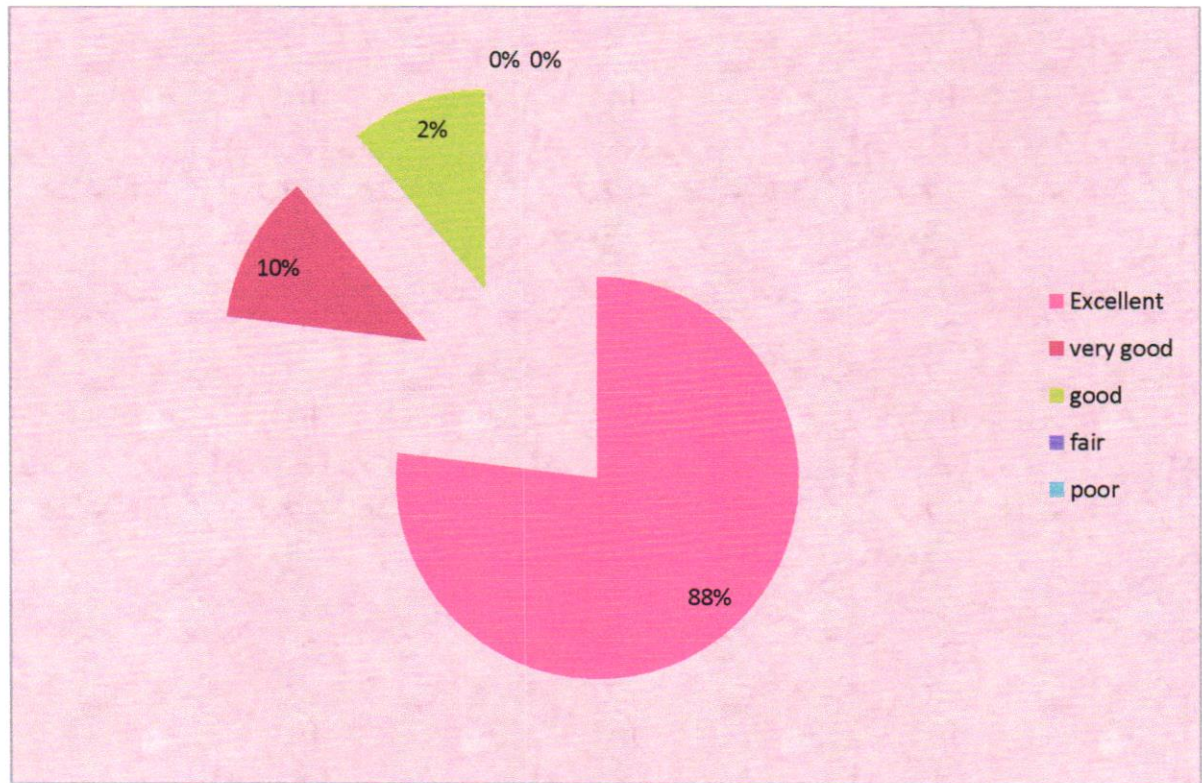


The above diagram illustrates that the simulation is teaching efficient; for that the students given feedback 88 % (400) Excellent, 9% (17) were given a very good, 3% (8) were given a fair .



B. Anny
Principal
NARAYANA COLLEGE OF NURSING
Chinthareddypalem,
NELLORE - 524 003

3) Demonstration

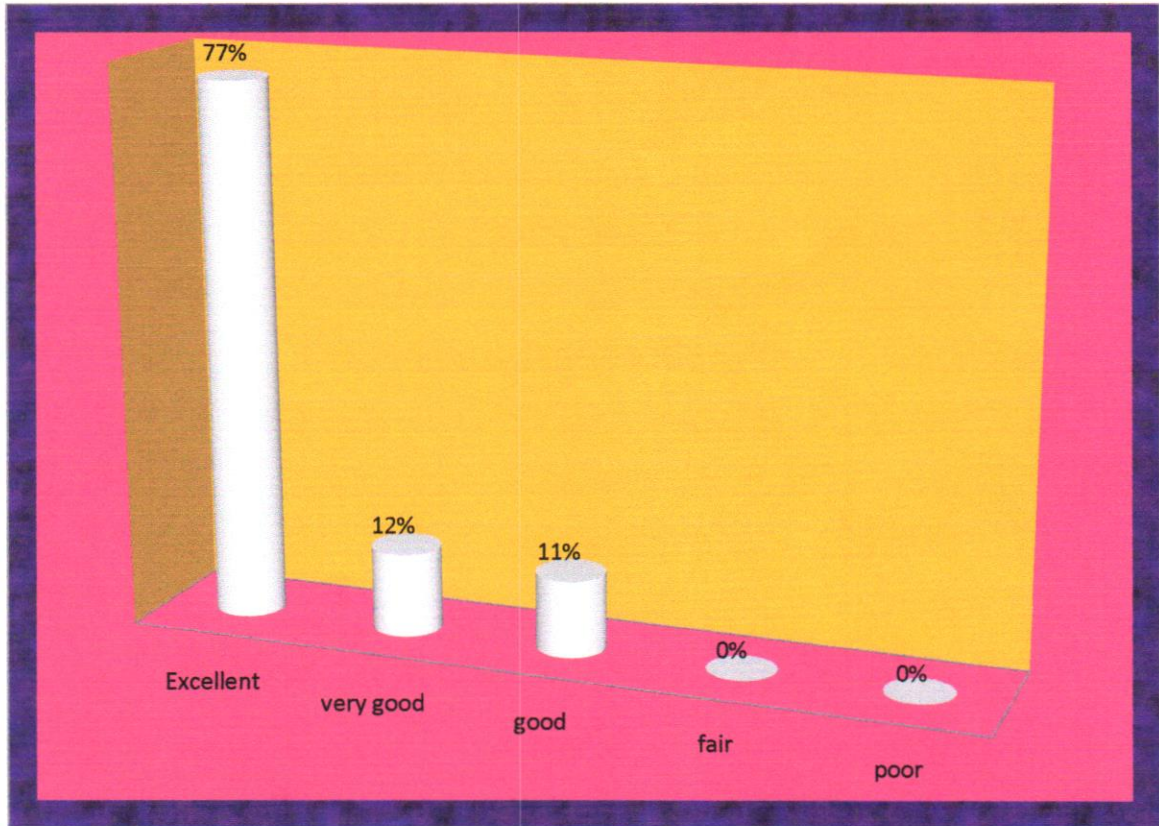


The above Pie diagram illustrates that the simulation is easy to use for that the students given feedback 88% (400) Excellent, 10% (18) were given a very good, 2% (7) were given a fair.



B. Chamy
Principal
NARAYANA COLLEGE OF NURSING
Chinthareddypalem,
NELLORE - 524 003

H) Procedures

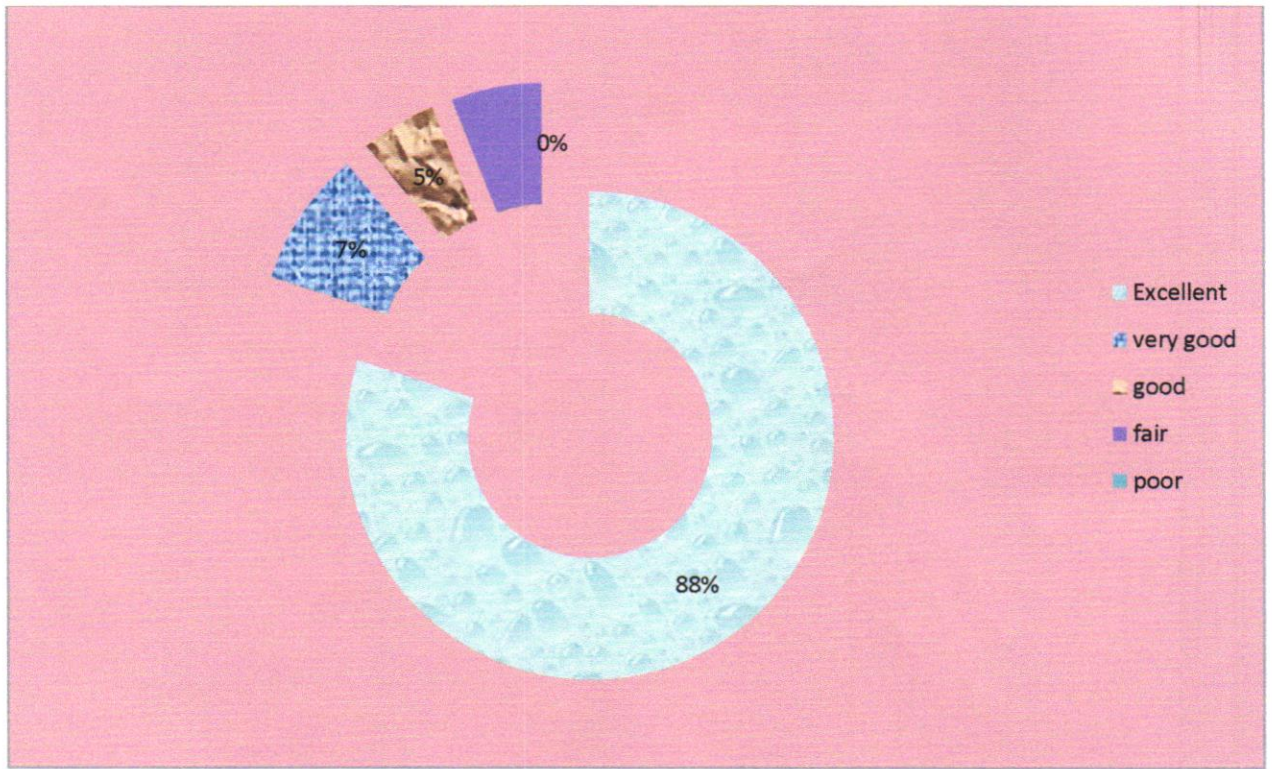


The above Bar diagram illustrates that the procedures shown were effective 77%(380) answered Excellent, 12%(25) were given a very good, 11% (20) were given a fair.



B. Anuj
Principal
NARAYANA COLLEGE OF NURSING
Chinthareddypalem,
NELLORE - 524 003

I) Teachers involvement

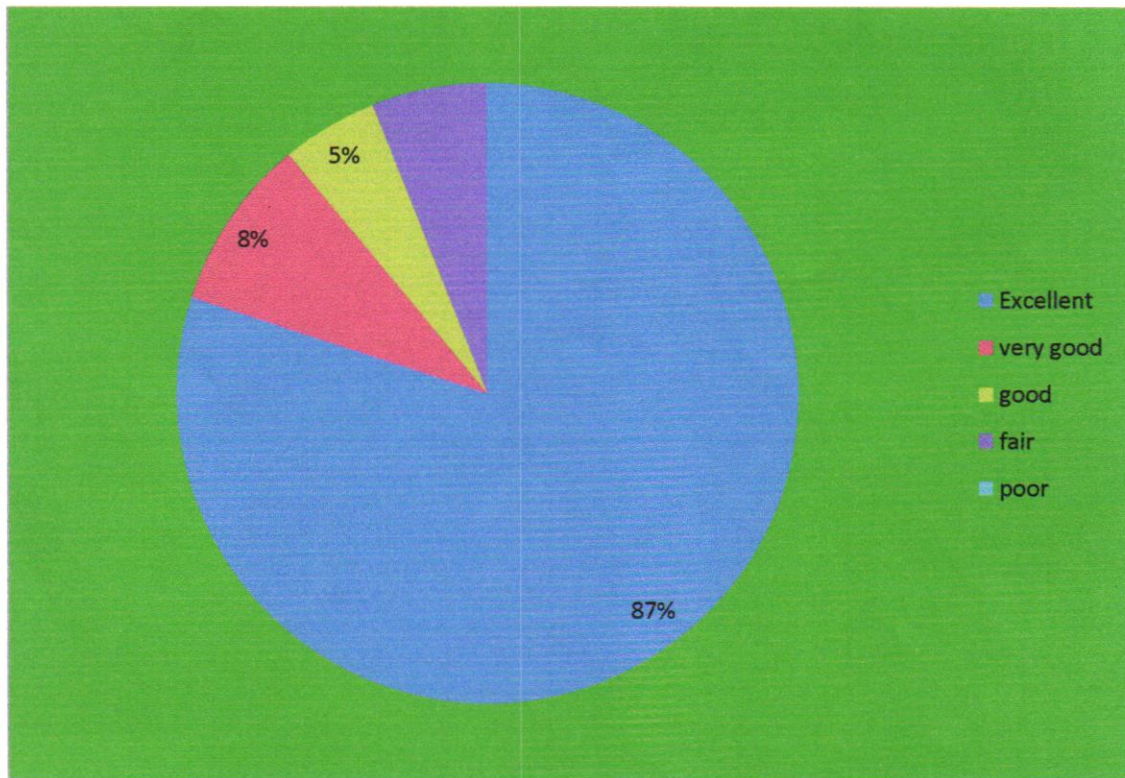


The above diagram illustrates that the teachers were involved in providing real like clinical situation. The students feedback- 88%(400) Excellent, 7%(19) were given a very good, 5% (6) were given a fair .



Bahuj
Principal
NARAYANA COLLEGE OF NURSING
Chinthareddypalem,
NELLORE - 524 003

k) The group size of the simulation event was appropriate

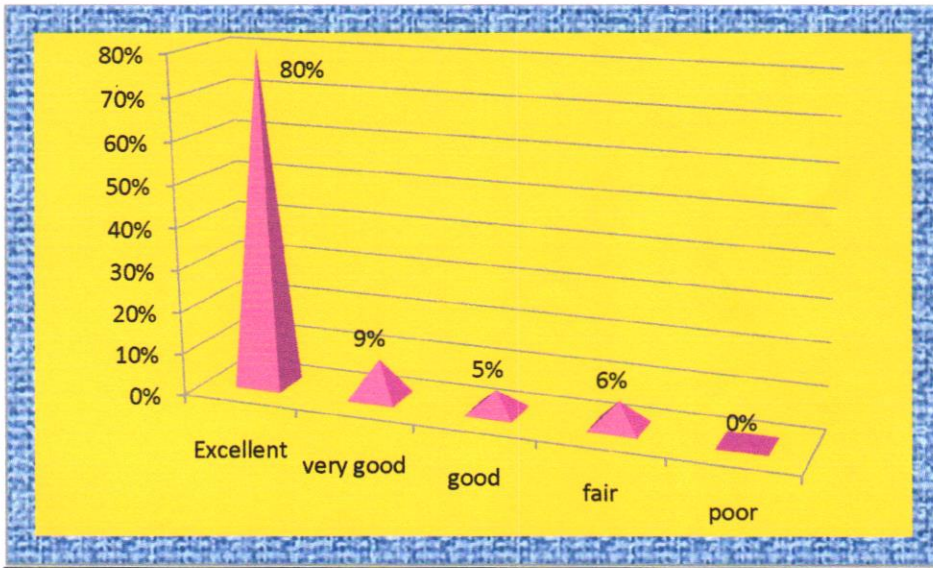


The above Bar diagram describes that the group size of the simulation event was appropriate. Felt like involved in a real clinical situation for that the students given feedback 87% (399) Excellent, 8%(20) were given a very good, 5%(7) were given a fair.



B. Anuj
Principal
NARAYANA COLLEGE OF NURSING
Chinthareddypalem,
NELLORE - 524 003

1) Opportunity to address feelings



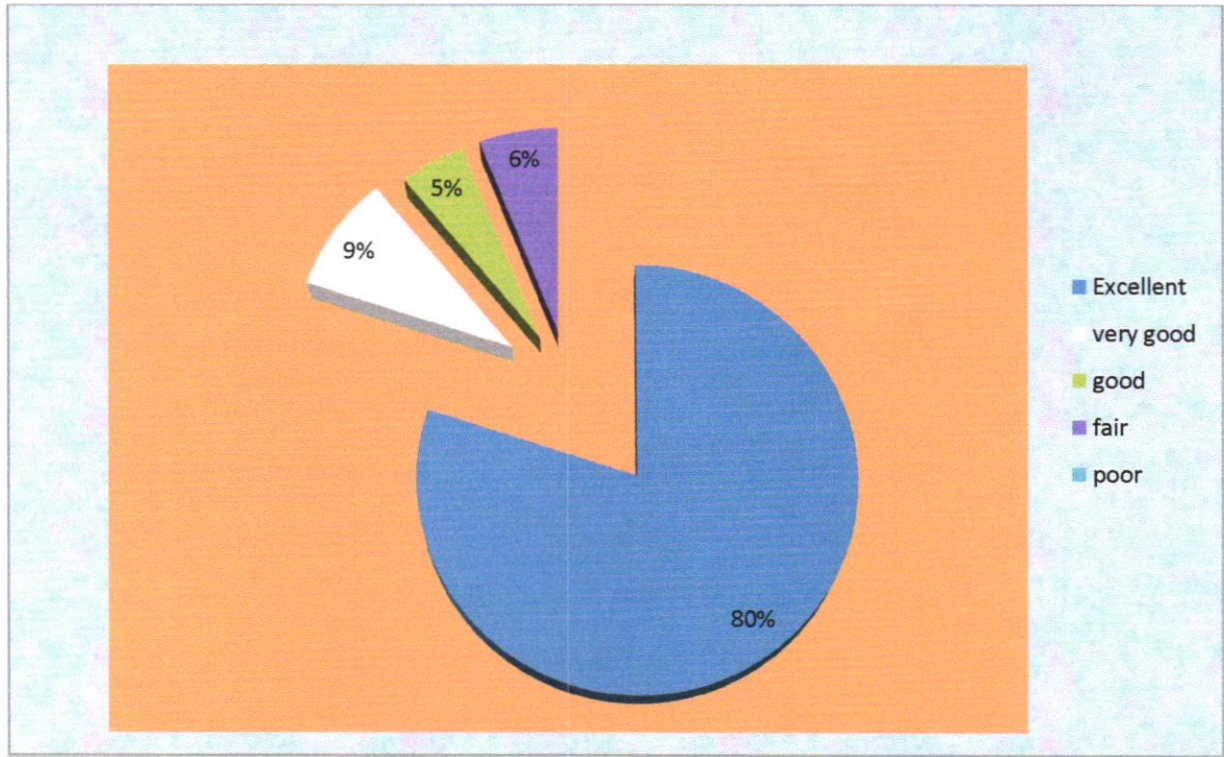
The above bar diagram describes that feedback of 80% were Excellent, 10% were given very good, only 10% were given a fair response.



B. Anuj
Principal
NARAYANA COLLEGE OF NURSING
Chinthareddypalem,
NELLORE - 524 003

4) Re demonstration

M) Lab duration period

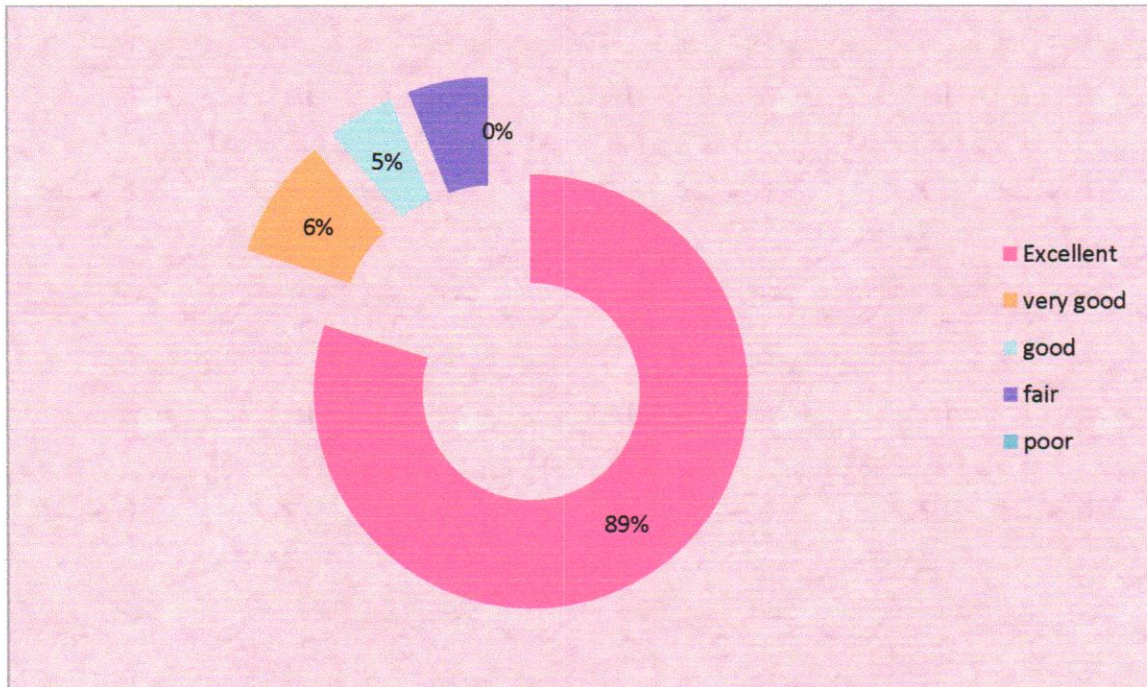


The above pie diagram describes that the sufficient Lab duration period was given where the students given feedback 80% (421) Excellent, 5% (4) were given a very good .



B. Anuj
Principal
NARAYANA COLLEGE OF NURSING
Chinthareddypalem,
NELLORE - 524 003

N)The re demonstration was helpful for learning :

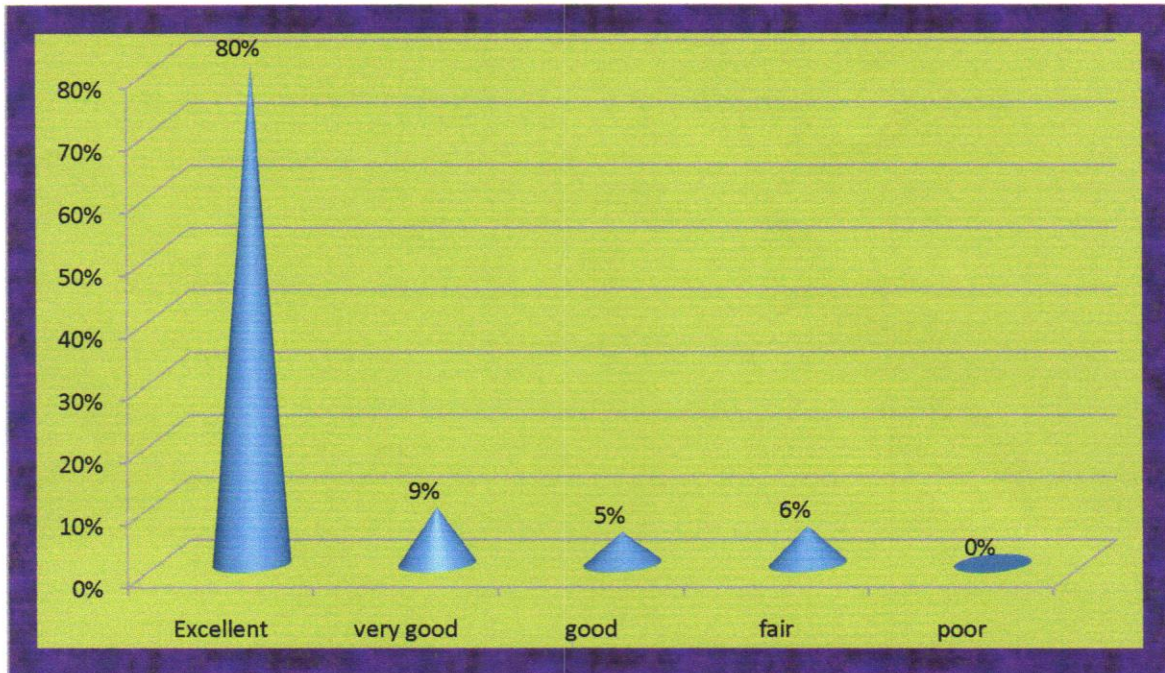


The above bar diagram describes that the re demonstration was helpful for learning. the students given feedback 89 % (382) Excellent, 6%(23) were given a very good, 5% (20).



B. Anuj
Principal
NARAYANA COLLEGE OF NURSING
Chinthareddypalem,
NELLORE - 524 003

o) The individual scenario allowed using the critical thinking skills learned through the nursing program during the simulation.



The above bar diagram describes that the individual scenario allowed using the critical thinking skills learned through the nursing program during the simulation for that the students given feedback 80% (340) ,9% (40) were given a very good 6% (20) of students given a fair.

B. Shree
Principal
NARAYANA COLLEGE OF NURSING
Chinthareddypalem,
NELLORE - 524 003



A. Indira
PRINCIPAL
Principal
NARAYANA COLLEGE OF NURSING
Chinthareddypalem,
NELLORE - 524 003